

A photograph of a church building with a prominent steeple topped with a cross. The church has a stone or brick facade and a dark roof. In the foreground, there are several trees, including one with pink blossoms on the left and a large green tree on the right. The sky is a clear, pale blue. The text is overlaid in a bold, yellow font.

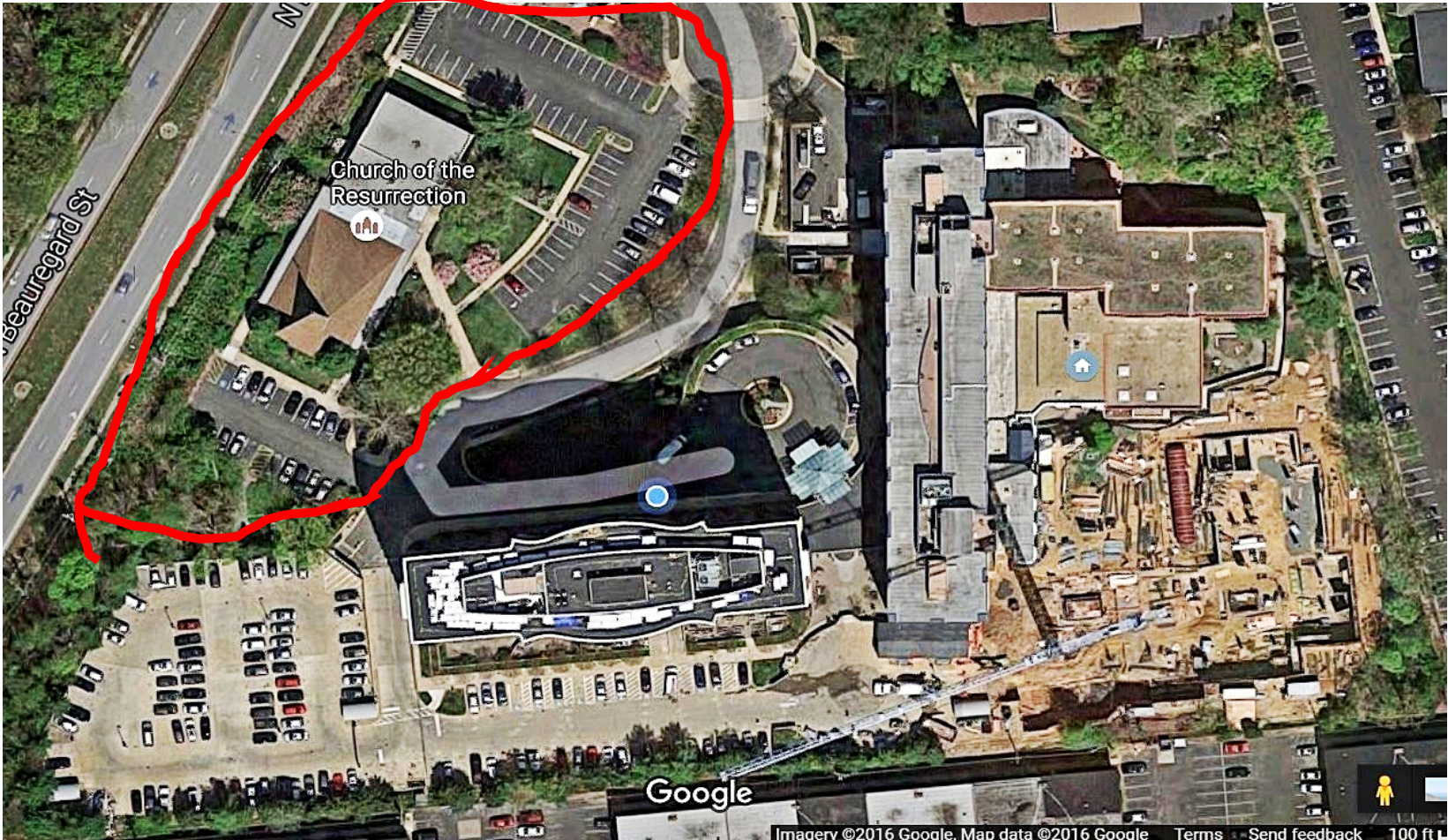
Using Church Property for Mission

**Lessons Learned by
Church of the Resurrection**

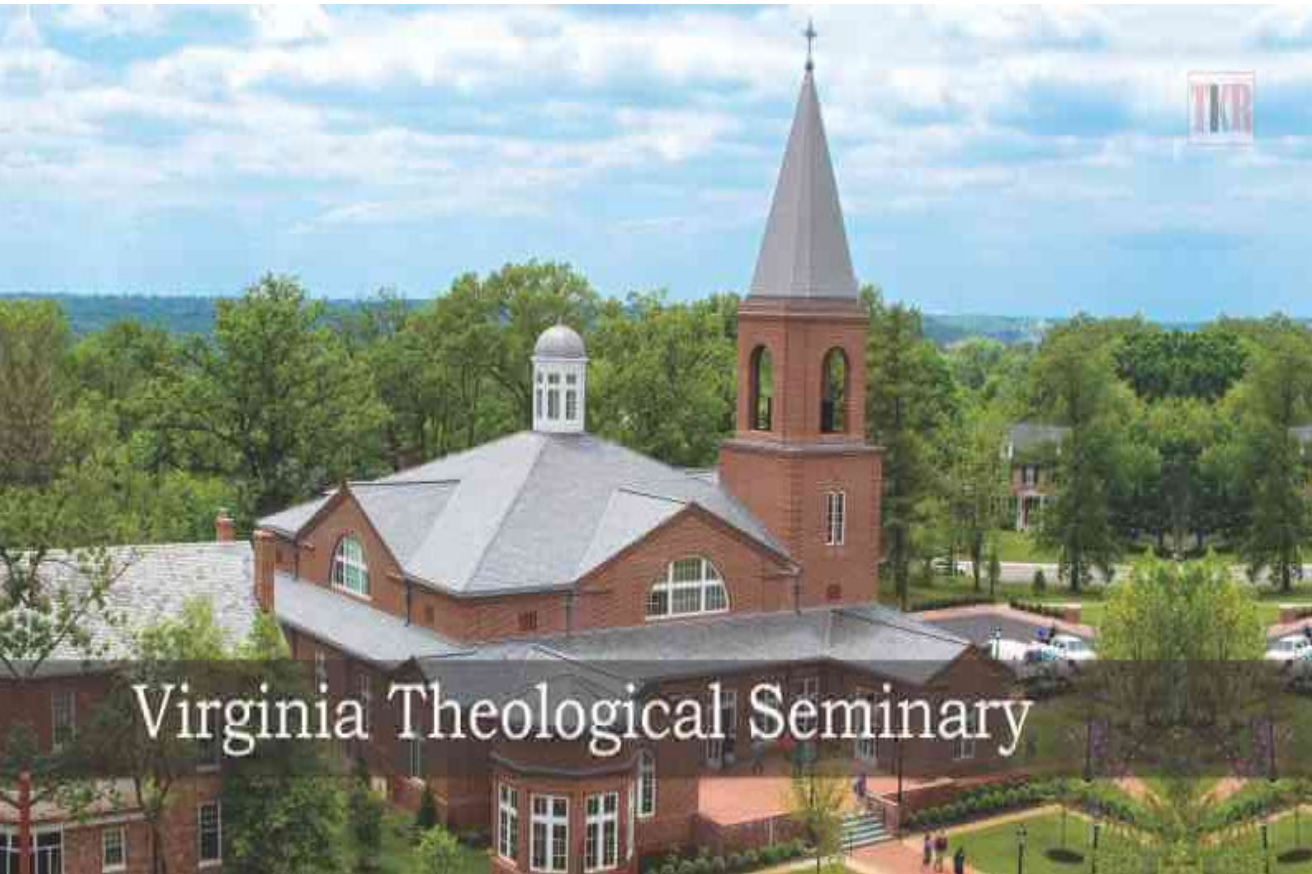
God's work—Our hands, voices, and hearts committed to our community and the world.



We are leaving our property...



Our “wilderness”



We have moved our offices



We are moving our food pantry



A new affordable housing building from St. James by AHC, Inc.

Our food pantry will be in St. James' "Mission House," very near our property.

We closed our inclusion preschool and opened a food pantry, feeding 8,396 people in 2,510 families (100 weeks)



We have moved our garden, also



Starting a community garden on premises two years ago.

The garden we are inheriting at our new office site.

Who are your neighbors?



The mission: affordable housing



Our requirement for AHC: Build at least 100 units of affordable housing, primarily for working families (40-60% AMI)



Bishop's requirement for us: Build a new church of at least 5,000 square feet



113 units for working families



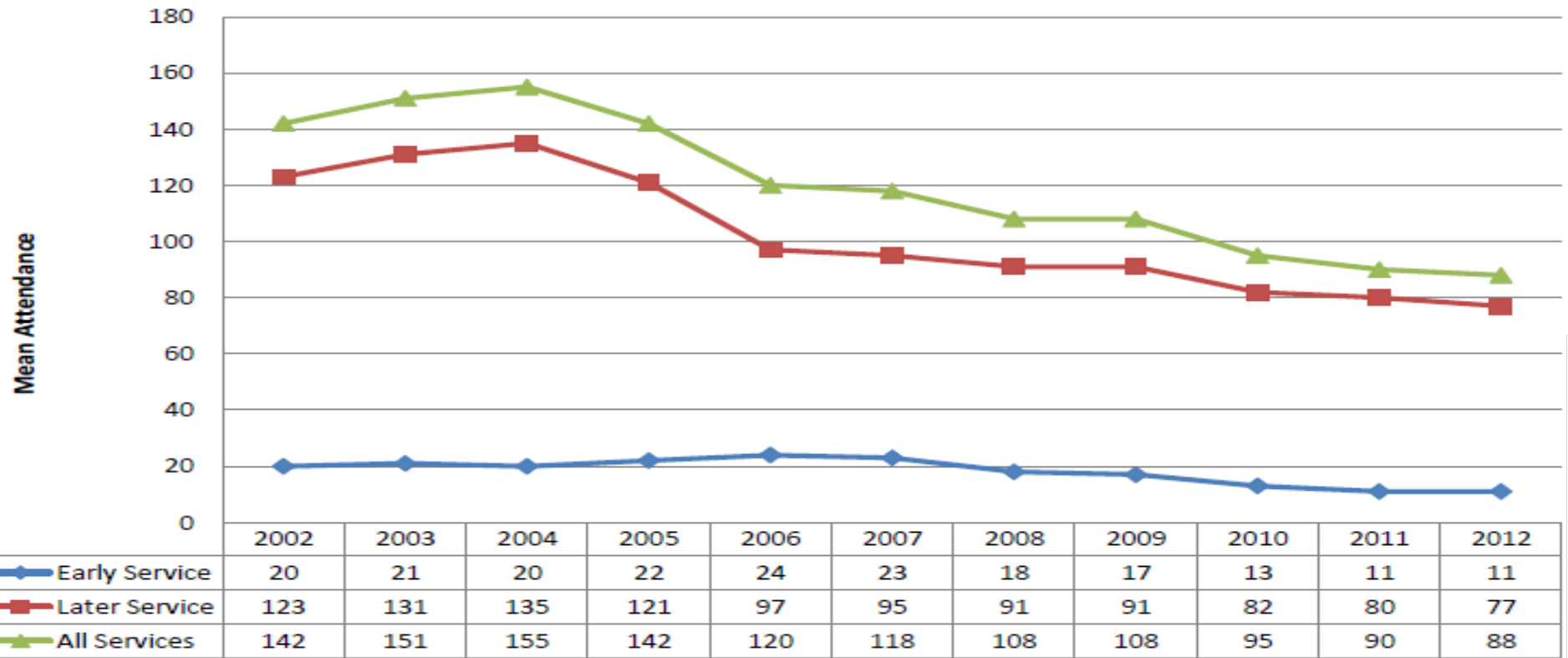
Our future “mission central”



Let's brainstorm...

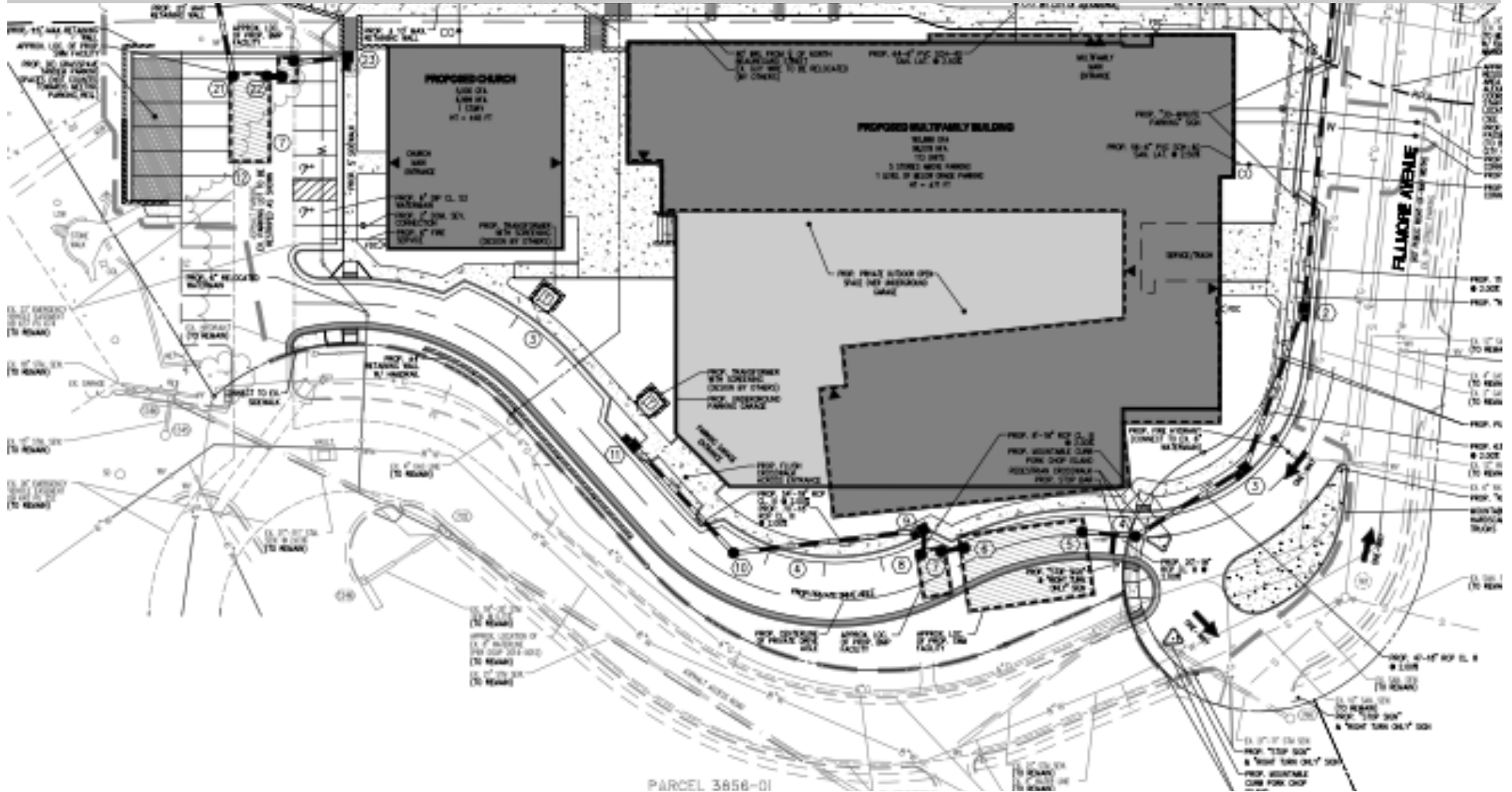


Lesson 1: Big efforts need to be missions, not programs



Deficit		\$ (18,558)	\$ 22,452	\$ (2,190)	\$ (13,459)	\$ (33,869)	\$ (69,150)	\$ (97,656)
---------	--	-------------	-----------	------------	-------------	-------------	-------------	-------------

Our “bold idea”



**God doesn't
call the "fit."**

God Doesn't Call
The Equipped,

He

equips

The Called.

© 2013

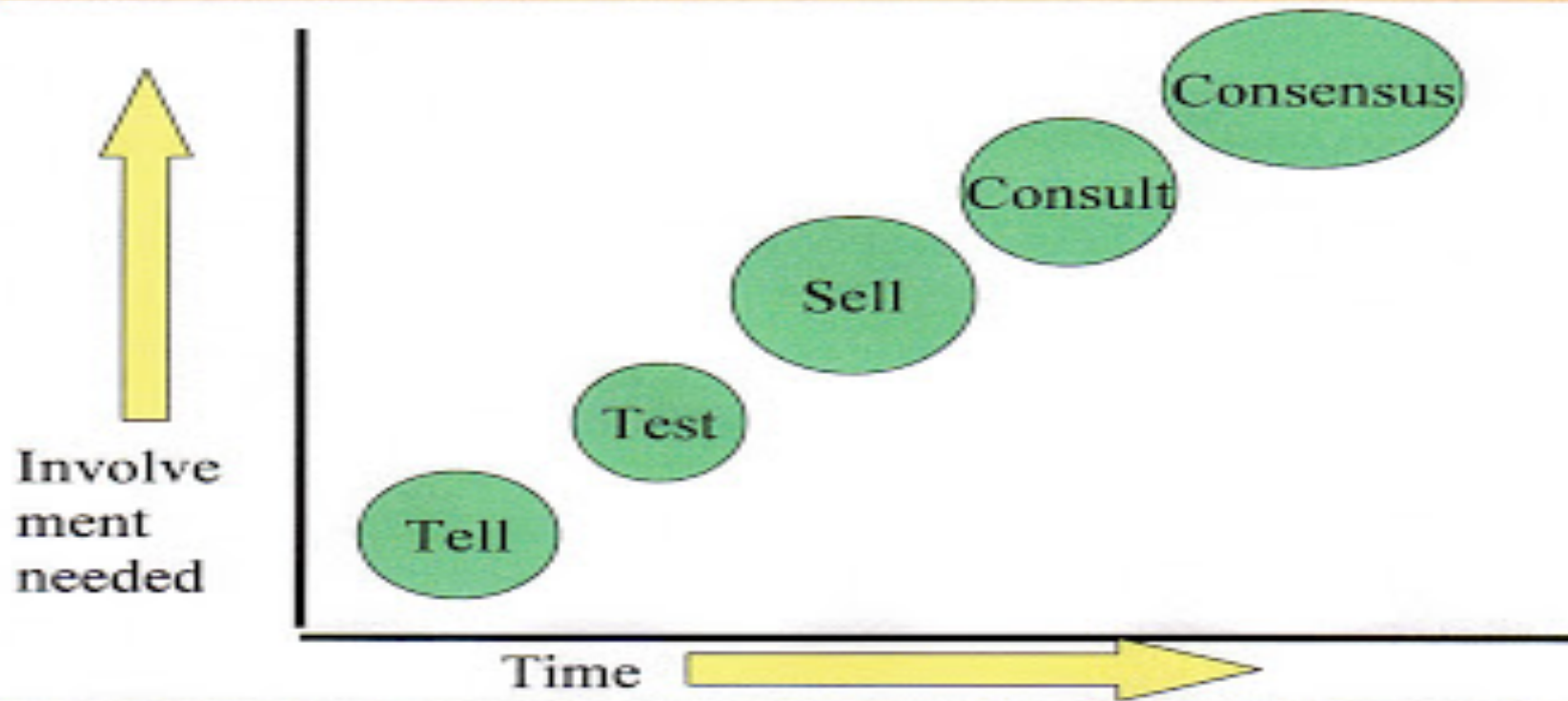
Lesson 2: Use all the tools you know to discern your mission and build consensus about it.

Resurrection Renewed Prayer

Father, we thank you for the vision you have entrusted to us. We ask for the courage, wisdom, energy, patience, and joy needed to do what you are asking us to do. Help us to be your hands, voices and hearts in our community and in our world. We ask this in Christ's name. Amen.

Lesson 3: Consensus takes time.

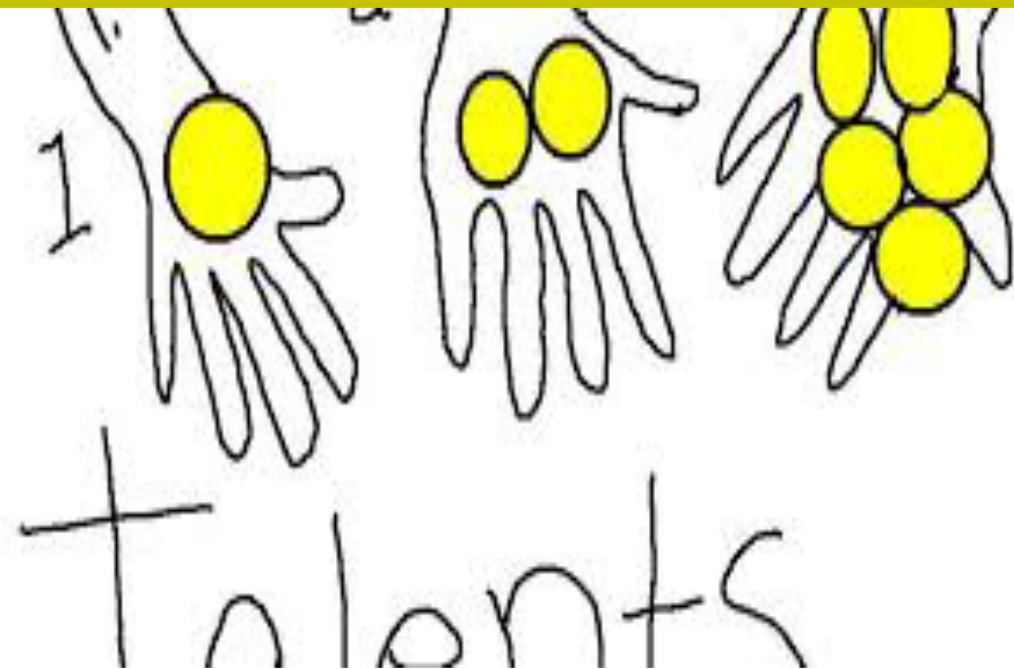
Decision Making Options



Big gifts a sign of impending big mission?



Other examples



What do we owe for what God has given us?

What if Peter had continued to deny knowing Jesus?

**Over 90% of us said consistently
“yes” to gifting our community
with affordable housing**



Lesson 4: Choose your mission partners wisely.



We chose AHC as our redevelopment partner

- **Non-profit affordable housing corporation**
 - **With a lot of experience**
 - **And a great track record**
 - **Plus a Resident Services Division with whom we could collaborate**

**Lesson 5:
The only time
the plan is ideal
is when you
first make it.**

PLAN B

~~PLAN A~~

A hand holding a grey marker is pointing at the text 'PLAN B' and crossing out 'PLAN A' with a red marker. The hand is wearing a light-colored, long-sleeved shirt.

**Lesson 6:
God provides
everything
needed to do
what God calls
us to do.**



*Where
God guides,
He provides*

ISAIAH 58:11

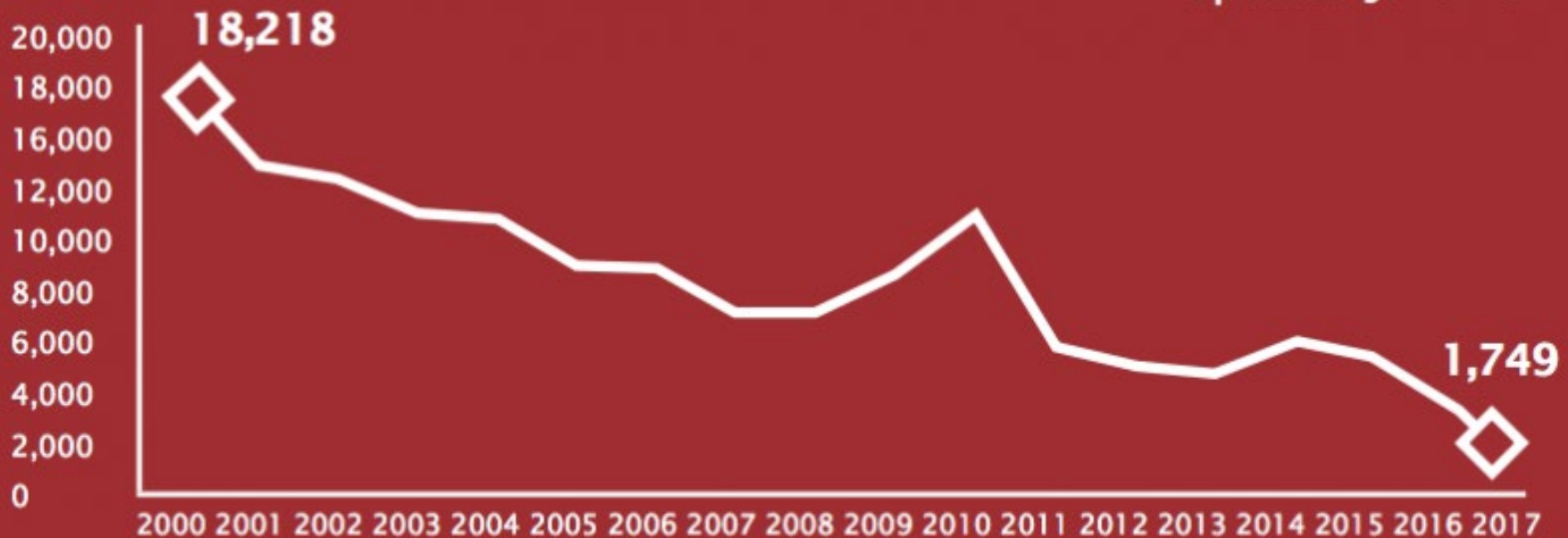


**Lesson 7:
Involve
everyone
(but use your
best leaders).**



Lesson 8: Mission is “now into the world” ... a lot.

Updated June 2017



2000-2017 Market-Affordable Trends in the City of Alexandria.

Source: Office of Housing, 2000-2017 Annual Point-in-Time Survey of Market Affordable Rental Units in Private Apartment Properties with 10 or More Units.

**Lesson 9:
No one's
neighbors are
as enthusiastic
about our
mission as
we are.**



We are all for affordable housing BUT:

- **The traffic is already bad...**
- **There is inadequate place for children to play (the way I did when I grew up)...**
- **There's already no parking...**
- **Just not here!**

**May Christ bless you ...
and may you find a
way to put your
property into
service of mission.**

